

ViSS Eletronics | Catalogue

2020



theViSS

• ViSS Electronics •

INDUSTRIAL ELECTRONICS MANUFACTURING | KAVIComm

Table of Contents

Introduction and History 3
Overview 3
Vision and Mission 3
Values 4
Compliance 4
FOR NOTING 4

AC-DC Power Supplies 5
PRODUCTS 6

S104CLV 2U 19" Rack Mount Unit..... 6
 S104CHV 2U 19" Rack Mount Unit..... 7
 S109 19" Rack Mount Power Supply..... 7
 S110 4U 19" Rack Power Supply 8
 S111 4U 19" Rack Power Supply..... 8
 DC Distribution Panel With Integral AC Power Supply..... 9
 S118 2U 19" Rack Power Supply 10
 S119 2U 19" Rack Power Supply 10
 with DC Combiner / Distribution Panel 11
 S1129 19" Rack Mount Dual (1+1) PSU / Charger 11
 Switch-Mode Power Supply Model S213 12
 Dual Switch-Mode 220V Power Supply Model S217 13
 S311 4U 19" Rack Power Supply 13

DC-DC Isolating Convertors..... 14

DC Distribution Panel 15
 With Integral DC-DC Converter 15
 S002 DC-DC Converter 16
 S002F DC-DC Converter 16-17
 S004 Isolating DC-DC Converter 17-18
 S005 Isolating DC-DC Converter 18
 S008 DC-DC Converter 19
 DC-DC Converter (Accessories) 20
 S008P DC-DC Converter 21
 S011 DC-DC Converter 21
 S012 DC-DC Converter 22
 S017 Dual DC-DC Converter 22
 S018 Isolating DC-DC Converter 23
 S019C, S020 DC-DC Converter 24
 S032 Freestanding 24
 DC-DC Isolating 25W Converter 25
 S032AR 1U 19" Rack Mount 25

Panels..... 26





DC Distribution Panel	27
With Integral DC-DC Convertor	27
ESK002 Series	27
With Integral AC Power Supply	28
ESK112 Series	28
DC Distribution Panels	29
ESK031 Series	29
S031 Series	29
Fuse Panels	30
S033 Fuse Panel	30

Other Products 31

S394 Balun Transformer	32
S394-8E1 Balun Transformer	32
Microwave Peripherals	33
S109CB 19" Rack Mount Power Supply	33
For Power Supply Batteries	33
S02/06 Battery Shelf, Rack Mount	33
S052 Ethernet Alarm Unit	34
For Power Supplies / Remote Site Equipment	34

theViSS

ViSS Electronics

Company Reg: 2011/108712/07
Tax. no: 9338319172
CSD Supplier No: MAAA0624059
BBBEE level 1 contributor

 T/M: +27 81 532 3330

 www.theviss.co

 hello@theviss.co

Introduction and History

SOS industrial Electronics is one of Africa's leading Electronic Manufacturing Services companies, committed to providing high quality Contract Electronics Manufacturing and Product Life Cycle Support.

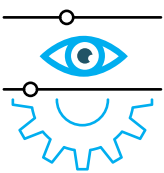


OVERVIEW

Our philosophy is based on the principle of PARTNERSHIP. This philosophy guides our navigation through the competitive and rapidly changing world we work in. This also dictates that we need to share the wealth, skills, capabilities and knowledge that are generated in realizing our future. We acknowledge the need to develop a deep sense of purpose with the people we serve and our partners to ensure that we, at all times serve their best interests. We are therefore their business partners in that we help them create and sustain their viability. We also understand that we co-exist in a broader society and community and that, since we are dependent on other's future existence, we need to partner with this society in a responsible manner to ensure sustainability.

Our parent company, has 30 years (Since 1988) of manufacturing history as both an Original Equipment Manufacturer (OEM) and Electronic Manufacturing Services (EMS) provider; Our trading company is has over 28 years as a sole provider of the parent company.

We are 100% young woman owned, ISO 9001:2008 certified and BBBEE level 1 contributor and certified company based in South Africa, Pretoria



VISION AND MISSION

Our mission is to be a world class leader in supplying and providing innovative & cutting edge service solutions in all specialised industry segments of the electronic assembly, including niche markets, by leveraging our expertise through strategic partnership, Innovative design & manufacturing and providing eco-friendly and efficient solutions.

By investing in vast strategic sectors & companies with high growth potential and through partnership, being innovative & exceeding stakeholder expectation, Embracing Diversity, Understanding our stakeholders' needs & delivering on them, Ensuring sustainability and corporate citizenship, developing people that will become socially responsible entrepreneurs & leaders of the world, guided by Umbrella World Capital Vision, Philosophy and Values.

VALUES

- Honesty and Integrity
- Social Responsibility
- Discipline and Accountability
- Team spirit and diligence
- Entrenchment of professionalism
- Encouragement of creativity and Innovation
- Commitment to efficiency

COMPLIANCE



ISO9001:2008 Certified (ISOQAR)

FOR NOTING

All SOS Electronics products are designed, developed and manufactured in South Africa, at our Pretoria based offices.



AC-DC Power Supplies

theViSS
ViSS Electronics

PRODUCTS



AC-DC Power Supplies

DUAL INPUT POWER SUPPLY / CHARGER, 48V DC

S104CLV 2U 19" Rack Mount Unit



Standard Version:

- Input Voltages 180-250V AC and 45-85V DC (48V & 60V Systems).
- Both AC & DC inputs can be used simultaneously.
- Output 54V DC @10A, continuously rated.
- LED Indicators for Output and DC Input.
- Output Over-voltage Crowbar Protection.
- IEC Chassis Plug with 2M mains cable.
- Separate outputs for load and for battery charging.
- Low Voltage Disconnect (Load-shed) circuit included.
- Internal adjustments for "Load-shed" and "Output-low" alarm thresholds.
- Operating Temperature 0-60 Deg. C.
- Colour: Powder Coated Motorcraft Grey.

Alarms:

Local Indicators and Remote Alarms (potential-free contacts)

- Mains Fail
- DC Input Fail
- Output Low
- Load-shed warning

Dimensions & Weight:

- Unpacked: 485mm Wide x 200mm Depth x 89mm Height / 8.6kg Mass
- Packed: 560mm Wide x 275mm Depth x 140mm Height / 9kg Mass

DUAL INPUT POWER SUPPLY / CHARGER, 48V DC

S104CHV 2U 19" Rack Mount Unit



Standard Version:

- Input Voltages 180-250V AC and 45-85V DC (48V & 60V Systems).
- Both AC & DC inputs can be used simultaneously.
- Output 110V DC @10A, continuously rated.
- LED Indicators for Output and DC Input.
- Output Over-voltage Crowbar Protection.
- IEC Chassis Plug with 2M mains cable.
- Separate outputs for load and for battery charging.
- Low Voltage Disconnect (Load-shed) circuit included.
- Internal adjustments for "Load-shed" and "Output-low" alarm thresholds.
- Operating Temperature 0-60 Deg. C.
- Colour: Powder Coated Motorcraft Grey.

Alarms:

Local Indicators and Remote Alarms (potential-free contacts)

- Mains Fail
- DC Input Fail
- Output Low
- Load-shed warning

Dimensions & Weight:

- Unpacked: 485mm Wide x 200mm Depth x 89mm Height / 8.6kg Mass
- Packed: 560mm Wide x 275mm Depth x 140mm Height / 9kg Mass

S109 2U 19" Rack Mount AC Switch-mode Power Supply

S109 19" Rack Mount Power Supply



Standard Version

- Input Voltage 180-250VAC.
- Fully fused.
- Output 12V, 24V or 48VDC Continuously rated.
- Output Over-Voltage Crowbar Protection.
- "220V AC Input" indicator.
- "DC available" indicator.
- IEC Chassis Plug with 3M mains cable.
- "ON / OFF" switch.

S109A		S109B		S109C	
Input	Output	Input	Output	Input	Output
220V AC	12V DC @15A	220V AC	12V DC @10A	220V AC	48V DC @5A

LS Version

- LS version has terminals for battery connection and has a low voltage disconnect (Load-shed) circuit included.
- Suitable for use with lead-acid batteries (not supplied).

Dimensions:

- Width: 19" or 485mm (430mm)
- Depth: 200mm
- Height: 2U (89mm)

Finish:

- Mass: 3.5 Kg
- Colour: Powder Coated Motorcraft Grey

AC-DC Power Supply, 500W Continuously rated.

S110 4U 19" Rack Power Supply



Standard Version

- Input Voltage 180-250VAC.
- Fully fused.
- Output 12V, 24V or 48VDC Continuously rated.
- Output Over-Voltage Crowbar Protection.
- "220V AC Input" indicator.
- "DC available" indicator.
- IEC Chassis Plug with 3M mains cable.
- "ON / OFF" switch.

S109A		S109B		S109C	
Input	Output	Input	Output	Input	Output
220V AC	13.6V DC @30A	220V AC	24V DC @20A	220V AC	48V DC @10A

LS Version

- LS version has terminals for battery connection and has a low voltage disconnect (Load-shed) circuit included.
- Suitable for use with lead-acid batteries (not supplied).

Dimensions:

- Width: 19" or 430mm
- Depth: 290mm
- Height: 4U (175mm)

Finish:

- Mass: 5 Kg
- Colour: Motorcraft Grey

AC-DC Power Supply, up to 1KW Continuously rated.

S111 4U 19" Rack Power Supply



Order Example:

- S111C (220V AC to 48V @20A, 4U Rack Mount)

Standard Version:

- Input Voltage 180-250V AC.
- Fully fused.
- Output Continuously rated.
- LED Output Indicator.
- Output Over-voltage Crowbar Protection.
- IEC Chassis Plug with 3M mains cable.

LS Version:

- LS version has terminal battery connection and has a Low Voltage Disconnect (Load-shed) circuit included.
- Compatible with external batteries for float charging.

Dimensions:

- Width: 19" or 485 mm (430mm excl. flange)
- Depth: 270mm
- Height: 4U (178mm)
- Mass: 9 Kg
- Colour: Powder Coated Motorcraft Grey

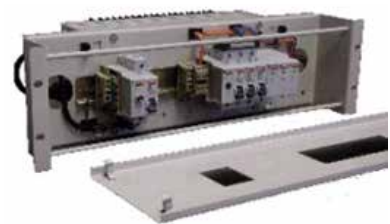
ESK112 Series



Distribution Panel Specification

- Removeable Front cover (no screws)
- Front access for wiring
- Input breaker and "Input Power" indicator.

- "Output Power" indicator.
- Output breakers x 3 with 3 spare positions.
- Circuit breaker rating dependant on modal type.
- System earth terminal.



Power Supply Specification

- PSU Rating up to 500W.
- PSU can be removed quickly & easily, without disturbing system wiring.

Input	Output
ESK112/220VAC/48/6	48V @10A
ESK112/220VAC/24/6	24V @20A
ESK112/220VAC/12/6	12V @30A

Dimensions:

- Width: 19"
- Height: 3U

Finish:

Powder Coated Motorcraft Grey



AC-DC Power Supply, up to 500W Continuously rated.

S118 2U 19" Rack Power Supply



Order Example:

S118A (220V AC to 12V @30A, 2U Rack Mount)

Standard Version:

- Input Voltage 180-250V AC.
- Fully fused.
- Output Continuously rated.
- LED Output Indicator.
- Output Over-voltage Crowbar Protection.
- IEC Chassis Plug with 2M mains cable.
- Operating Temperature 0-60 Deg. C.

S118A		S118B		S118C	
Input	Output	Input	Output	Input	Output
220V AC	12V DC @30A	220V AC	24V DC @20A	220V AC	48V DC @10A

LS Version:

- LS version has terminal battery connection and has a Low Voltage Disconnect (Load-shed) circuit included.
- Compatible with external batteries for float charging.

Dimensions:

- Width: 19" or 485 mm (430mm excl. flange)
- Depth: 200mm
- Height: 2U (89 mm)
- Mass: 3.5 Kg
- Colour: Powder Coated Motorcraft Grey

AC-DC Power Supply, up to 500W Continuously rated.

S119 2U 19" Rack Power Supply



Order Example:

S119A (220V AC to 12V @30A, 2U Rack Mount with Load-shed)

Standard Version:

- Input Voltage 180-250V AC.
- Fully fused.
- Output Continuously rated.
- LED Output Indicator.
- Output Over-voltage Crowbar Protection.
- IEC Chassis Plug with 2M mains cable.
- Separate battery and load connections.
- Low Voltage Disconnect (Load-shed) circuit included.
- Compatible with external battery / batteries for float charging.
- Internal adjustments for "Load-shed" and "Output-low" alarm thresholds.
- Operating Temperature 0-60 Deg. C.

Alarms: Local

- Mains Fail
- Output Low
- Load-shed warning

Remote (potential-free contacts)

- Mains Fail
- Output Low
- Load-shed warning

Dimensions:

- Width: 19" or 485 mm (430mm excl. flange)
- Depth: 200mm
- Height: 2U (89 mm)
- Mass: 3.5 Kg
- Colour: Powder Coated Motorcraft Grey

S129 19" Rack Mount Dual (1+1) AC PSU with DC Combiner / Distribution Panel.

S129 19" Rack Mount Dual (1+1) PSU / Charger with DC Combiner / Distribution Panel



Order Example:

S119A (220V AC to 12V @30A, 2U Rack Mount with Load-shed)

Standard Version:

- Input Voltage 180-250V AC.
- Fully fused.
- Output Continuously rated.
- LED Output Indicator.
- Output Over-voltage Crowbar Protection.
- IEC Chassis Plug with 2M mains cable.
- Separate battery and load connections.
- Low Voltage Disconnect (Load-shed) circuit included.
- Compatible with external battery / batteries for float charging.
- Internal adjustments for "Load-shed" and "Output-low" alarm thresholds.
- Operating Temperature 0-60 Deg. C.

S129A		S129B		S129C	
Input	Output	Input	Output	Input	Output
220V AC	12V DC @15A	220V AC	24V DC @10A	220V AC	48V DC @5A

Spec for Each PSU

- Input Voltage 180-250VAC.
- Fully fused.
- Output 12V, 24V or 48VDC Continuously rated.
- Output Over-Voltage Crowbar Protection.
- "220V AC Input" indicator.
- "DC available" indicator.

Spec for Comb. / Distribution Panel

- 2 x Input Breaker Switches
- 1 x Output Breaker. (Up to 6 breakers may be specified).
- External Alarms for "Mains Fail" and "Low Output".
- Load-shed Circuit.
- Removable Front Panel for wiring.

Overall Dimensions:

- Width: 19" or 485mm (430mm excl. flange)
- Depth: 200mm
- Height: 7U (311mm)

Finish:

- Mass: 9.5 Kg
- Colour: Powder Coated Motorcraft Grey



Switch-Mode Power Supply Model S213

Switch-Mode Power Supply Model S213



Input	Output
220V AC + 20%	<ul style="list-style-type: none"> • 48 or 54V DC + 3% • 20A Max (1+1) • 40A Max (Single unit)
Battery Type	Sealed Calcium Lead-Acid, 4 x 12V 102 A/Hr
External Alarms	<ul style="list-style-type: none"> • Mains Fail • Module Fail • Output Low
Internal Alarms	<ul style="list-style-type: none"> • Mains Fail • Module Fail • Output Low • Boost Voltage • Tamper Alarm
Metering	<ul style="list-style-type: none"> • OP Volts • OP Amps
Operating Temperature	0 – 40 Deg. C

Each power supply drawer can be removed or replaced without interrupting system operation.

Other Features:

- Latching over-voltage trips
- Bi-metallic over-temperature trips
- Provision for 4 switched external loads
- Rugged Construction
- Cable entry at bottom, side or rear
- Battery drawer lockable, with tamper alarm
- Battery boost facility.
- 220V Isolation Transformer for lightning protection.

Dimensions:

Width = 600mm
 Height = 1530mm
 Depth = 400mm
 Mass = 110.2 Kg. (No batteries fitted).

Dual Switch-Mode 220V Power Supply Model S217

Dual Switch-Mode 220V Power Supply Model S217



If battery charging is required, add suffix "LS" to have outputs for load and battery, with Load-shed cct.
One power supply drawer can be removed or replaced without interrupting system operation.

Other Features:

- Latching over-voltage trips.
- Bi-metallic over-temperature trips.
- Provision for 4 switched external loads
- Standard 19" Rack Mount.

S217A		S217B		S217C	
Input	Output	Input	Output	Input	Output
220V AC	13,6V DC @60A	220V AC	27,2V DC @40A	220V AC	54V DC @20A
S217AE		S217BE		S217CE	
Input	Output 1+1	Input	Output 1+1	Input	Output 1+1
220V AC	13,6V DC @30A	220V AC	27,2V DC @20A	220V AC	54V DC @10A

Order Example:

S217CE (220V AC to 54V @10A 1+1, 7U Rack Mount)

Dimensions:

- Width = 19" or 485mm (430mm excl. flange)
- Height = 7U (310mm)
- Depth = 270mm

External Alarms:

- Mains Fail
- Module Fail
- Output Low

Finish: Powder Coated

Colour: Motorcraft Grey

AC-DC Power Supply, up to 2KW Continuously rated.

S311 4U 19" Rack Power Supply



Standard Version:

- Input Voltage 180-250V AC.
- Fully fused.
- Output Continuously rated.
- LED Output Indicator.
- Output Over-voltage Crowbar Protection.
- IEC Chassis Plug with 3M mains cable.

S311A		S2311B		S311C	
Input	Output	Input	Output	Input	Output
220V AC	12V DC @120A	220V AC	24V DC @80A	220V AC	48V DC @40A

Order Example:

S311C (220V AC to 48V @40A, 4U Rack Mount)

LS Version:

- LS version has terminal battery connection and has a Low Voltage Disconnect (Load-shed) circuit included.
- Compatible with external batteries for float charging.

Dimensions:

- Width: 19" or 485 mm (430mm excl. flange)
- Depth: 270mm
- Height: 4U (178 mm)



DC-DC Isolating Convertors

theViSS
ViSS Electronics

ESK002 Series

DC Distribution Panel With Integral DC-DC Converter



Distribution Panel Specification

- Removeable Front cover (no screws)
- Front access for wiring
- Input breaker and "Input Power" indicator.

- "Output Power" indicator.
- Output breakers x 3 with 3 spare positions.
- Circuit breaker rating dependant on modal type.
- System earth terminal.



Converter Specification

- Isolated, Input to Output & to Case.
- Rating up to 500W.
- Converter can be removed quickly & easily, without disturbing system wiring.

Model	Output
ESK002/110VDC/48/6	48V @10A
ESK002/110VDC/12/6	12V @30A
ESK002/48VDC/12/6	12V @30A



- For other, possible Input and Output voltages, see model S002 in DC-DC section

Dimensions:

- Width 19"
- Height 3U

Finish: Powder Coated

Colour: Motorcraft Grey

DC-DC Isolated 500W Converter

S002 DC-DC Converter



S002A			S002B			S002C		
Input	OP V	OP A	Input	OP V	OP A	Input	OP V	OP A
12V	12V	24A	12V	24V	16A	12V	48V	8A
24V			24V			24V		
48V			48V			48V		
72V	12V	30A	72V	24V	20A	72V	48V	10A
110V			110V			110V		
220V			220V			220V		

Ordering Example - S002A24V (24V to 12V @30A).

- Suitable for communications applications in hostile environments.
- Galvanically isolated input to output and to case.
- Continuously rated at 500W.
- Soft start.
- Heavy-duty connector and 2 metres of cable supplied.
- Suitable for cold wall mounting if used at full power continuously.
- Reverse polarity protection

Dimensions:

- Length 280mm
- Width 170mm
- Height 90mm

Finish:

- Mass 2,5 Kg
- Colour: Powder Coated Hammertone Grey

S002F DC-DC Converter

S002F DC-DC Converter



S002FHA			S002FHB			S002FHC		
Input	OP V	OP A	Input	OP V	OP A	Input	OP V	OP A
12V	12V	24A	12V	24V	16A	12V	48V	8A
24V			24V			24V		
48V			48V			48V		
72V	12V	30A	72V	24V	20A	72V	48V	10A
110V			110V			110V		
220V			220V			220V		

Ordering Example: S002FHA24V(Freestanding Horizontal 24V to 12V @30A).

S002F DC-DC Converter

S002FVA			S002FVB			S002FVC		
Input	OP V	OP A	Input	OP V	OP A	Input	OP V	OP A
12V	12V	24A	12V	24V	16A	12V	48V	8A
24V	12V	30A	24V	24V	20A	24V	48V	10A
48V			48V					
72V			72V					
110V			110V					
220V			220V					



Ordering Example: S002FVA24V (Freestanding Vertical 24V to 12V @30A)

- Suitable for communications applications in hostile environments.
- Galvanically isolated input to output and to case.
- Continuously rated up to 500W. (Low Voltage Types are de-rated, as per table).
- Soft start.
- Heavy-duty connector and 2 metres of cable supplied.
- Free Standing or can be mounted using mounting plate.

Dimensions:

- Length 280mm
- Width 125mm
- Height 130mm

Finish:

- Mass 4 Kg
- Colour: Powder Coated Black

S004 Isolating DC-DC Converter

S004 Isolating DC-DC Converter



Freestanding / Wall Mounted Version

- Suitable for communications applications in hostile environments.
- Rugged, Splash-proof Enclosure.
- Heavy-duty connector and 2 metres of cable supplied.
- Requires cold-wall mounting if used at full power continuously.

Dimensions:

- Length 220mm
- Width 151mm
- Height 69mm

Finish:

- Mass 1,25 Kg
- Colour: Powder Coated Hammertone Grey

Features

- Screw Terminal Connections at Rear
- LEDs for indication of Input & Output
- Front panel rocker switch.



Rack Mounted Version

Dimensions:

- Width 19" (430mm)
- Depth 200mm
- Height 2U (85mm)

Finish:

- Colour: Powder Coated Motorcraft Grey

S004 Specification

- Galvanically isolated input to output and to case.
- Continuously rated at 250W.
- Safe operating window.
- Soft start.
- Reverse Polarity Protection

S002FHA			S002FHB			S002FHC		
Input	OP V	OP A	Input	OP V	OP A	Input	OP V	OP A
12V	12V	24A	12V	24V	16A	12V	48V	8A
24V	12V	30A	24V	24V	20A	24V	48V	10A
48V			48V					
72V			72V					
110V			110V			110V		
220V			220V			220V		

Ordering Example:

S004A24V (24V to 12V @15A) Freestanding
 S004AR24V (24V to 12V @15A) 2U Rack Mount

S005 Isolating DC-DC Converter



Rack Mounted Version

Features

- Screw Terminal Connections at Rear
- LEDs for indication of Input & Output
- Front panel rocker switch.

Dimensions:

- Width 19" (430mm)
- Depth 200mm
- Height 2U (85mm)

Finish:

- Mass 1,25 Kg
- Colour: Powder Coated Motorcraft Grey

S004 Specification

- Galvanically isolated input to output and to case.
- Continuously rated at 250W.
- Safe operating window.
- Soft start.
- Reverse Polarity Protection

S005A			S005B			S005C		
Input	OP V	OP A	Input	OP V	OP A	Input	OP V	OP A
12V	12V	13A	12V	24V	8A	12V	48V	4A
24V	12V	15A	24V	24V	10A	24V	48V	5A
48V			48V					
72V			72V					
110V			110V			110V		
220V			220V			220V		

Ordering Example:

S005AR24V (24V to 12V @15A)
 2U Rack Mount



S008 DC-DC Convertor

S008 DC-DC Converter



Rack Mounted Version



**With Accessory Board type S468 fitted.
See next page. When ordering, add suffix CL.**

S008ALV	
Input	Output
11-32V	13.6V @ 8A

S008BLV	
Input	Output
11-32V	24V @ 4A

S008AMV	
Input	Output
20-60V	13.6V @ 12A

S008BMV	
Input	Output
20-60V	24V @ 6A

S008AHV	
Input	Output
55-165V	13.6V @ 12A

S008BHV	
Input	Output
55-165V	24V @ 6A

- Particularly suitable for communications applications in hostile environments.
- Galvanically isolated input to output and to case.
- Continuously rated @170W.
- Output over-voltage protection circuit.
- Soft start.
- Input over-voltage protection trip.
- Robust 4-pin connector, with latching plug.
- Reverse polarity protection
- Supplied with 2M of connecting wire and plug

Dimensions:

- Width 150mm
- Depth 170mm
- Height 41mm

Finish:

- Base: Anodised Aluminium.
- Lid: Plated Steel
- Mass: 0.5Kg



For Railway Locomotive and Carriage Applications



S577 – Power Distribution

S577 – Power Distribution

- Suitable for connecting power to 4 loads.
- Supplied with 3 x 7.5A fuses & 1 polystyrene switch.

S489 – Input Surge Suppression

- For 110V DC Inputs.
- Replacement for S424.
- Fuse protection in positive & negative lines.



S489 – Input Surge Suppression



S468 – Surge Suppression & Power Distribution

S468 – Surge Suppression & Power Distribution

- Suitable for mounting on lids of S008 Convertors.
- Supplied with 5A fuses (Output)
- Input fuse protection on positive & negative lines.

S464 – Low Voltage Disconnect Board

- For use with 12V 7A/Hr Lead-acid battery.
- Uses N Channel FET to Switch Negative Line
- Trip Voltage 10.5V
- Restore Voltage 12.5V



S464 – Low Voltage Disconnect Board



For Railway Locomotive Radio Maintenance
S026 – 72V DC & 110VDC @2A
S025 – 110V DC @2A only

For Railway Locomotive Radio Maintenance

S026 – 72V DC & 110VDC @2A
 S025 – 110V DC @2A only

- Input Voltage 220V AC to + 10%
- Continuously Rated.
- Colour Black Powder Coated
- Mass 5.5 Kg

Approx. Dimensions:
 Width 157mm, Depth 200mm
 Height 149mm incl. Feet



S008P DC-DC Converter

S008P DC-DC Converter



Front View

Standard Version

- Fully fused.
- Output 48VDC Continuously rated.
- Output Over-Voltage Crowbar Protection.
- "DC available" indicator.

S008CP

Input	Output
88-264V DC	48V @ 3A

Dimensions:

- Width: 485mm
- Depth: 250mm
- Height: 1U

Finish:

- Mass: 2 Kg
- Colour: Powder Coated Motorcraft Grey

S011 Isolating DC-DC Converter

S011 DC-DC Converter



Features:

- Latching over-voltage trip.
- Bi-metallic over-temperature trip.
- Standard 19" Rack Mount.

S011A x		S011B x		S011C x	
Input	Output	Input	Output	Input	Output
24V	12V DC @72A	24V	24V DC @40A	24V	48V DC @20A
48V					
110V					
220V					

Dimensions:

- Width = 19" or 485mm (430mm excl. flange)
- Height = 4U (175mm)
- Depth = 270mm

Finish: Powder Coated

Colour: Motorcraft Grey

S012 Isolating DC-DC Convertor

S012 DC-DC Convertor



Features:

- Latching over-voltage trip.
- Bi-metallic over-temperature trip.
- Standard 19" Rack Mount.

S012A x		S012B x		S012C x	
Input	Output	Input	Output	Input	Output
24V	12V DC @140A	24V	24V DC @80A	24V	48V DC @40A
48V					
110V					
220V					

Dimensions:

- Width = 19" or 485mm (430mm excl. flange)
- Height = 4U (175mm)
- Depth = 270mm

Finish: Powder Coated

Colour: Motorcraft Grey

S017C / S017CE Dual Isolating DC-DC Convertor (1+1)

S017 Dual DC-DC Convertor



Features:

- Latching over-voltage trips.
- Bi-metallic over-temperature trips.
- Input / Output breakers optional
- Standard 19" Rack Mount.

One power supply drawer can be removed and replaced without interrupting system operation.

S017CE x		S017C x	
Input	Output	Input	Output
24V	48V DC @10A (1+1)	24V	48V DC @20A (1+1)
48V			
110V			
220V			

Order Examples: S017CE110V (110V DC to 48V DC, 7U Rack Mount)
S017C110V (110V DC to 48V DC, 7U Rack Mount)

Dimensions:

- Width = 19" or 485mm (430mm excl. flange)
- Height = 7U (310mm)
- Depth = 270mm

Finish: Powder Coated

Colour: Motorcraft Grey



S018 Isolating DC-DC Converter



Freestanding / Wall Mounted Version

Features:

- Heavy-duty connector and 2 metres of cable supplied.
- Suitable for cold wall mounting if used at full power continuously.

Dimensions:

- Length: 220mm
- Width: 151mm
- Height: 69mm

Finish:

- Mass: 1,25 Kg
- Colour: Powder Coated Black

Features:

- Screw Terminal Connections at Rear
- LEDs for indication of Input & Output.
- Front panel rocker switch



Rack Mounted Version

Dimensions:

- Length: 19" (430mm)
- Depth: 200 mm
- Height: 2U (85mm)

Finish:

- Colour: Powder Coated Motorcraft Grey

- Galvanically isolated input to output and to case.
- Continuously rated at 120W.
- Soft start.
- Reverse Polarity protection

S018A			S018B			S018C		
Input	OP V	OP A	Input	OP V	OP A	Input	OP V	OP A
12V	12V	6A	12V	24V	3A	12V	48V	1.5A
24V	12V	10A	24V	24V	5A	24V	48V	2.5A
48V			48V					
72V			72V					
110V			110V			110V		
220V			220V			220V		

Ordering Example:

- S018A24V (24V to 12V @6A) Freestanding
 S018AR24V (24V to 12V @6A) 2U Rack Mount



S019C, S020 DC-DC Converter

S019C, S020 DC-DC Converter



Features:

- Latching over-voltage trips.
- Bi-metallic over-temperature trips.
- Input / Output breakers optional
- Standard 19" Rack Mount.

S020C has 4 drawers as illustrated, S019 has 3 drawers and 1 blanking plate

S019C x		
Input	Output	
24V	48V DC	60A (40A n+1)
48V		
110V		
220V		

S020C x		
Input	Output	
24V	48V DC	80A (60A n+1)
48V		
110V		
220V		

Order Examples: S019C110V (110V DC to 48V DC, 11U Rack Mount)
S020C110V (110V DC to 48V DC, 11U Rack Mount)

Dimensions:

- Width = 19" or 485mm (430mm excl. flange)
- Height = 7U (310mm)
- Depth = 270mm

Finish: Powder Coated

Colour: Motorcraft Grey

S032 Freestanding

DC-DC Isolating 25W Converter



Features:

- Heavy-duty Terminal Block.
- Optional DIN Rail Mount Adaptor

Dimensions:

- Length: 93mm
- Width: 66mm
- Height: 44mm

Finish:

- Colour: Powder Coated Black



S032AR 1U 19" Rack Mount



- Front Panel LED Indicator "Output"



- Screw Terminal Connections at Rear

Features:

- Galvanically isolated input to output and to case.
- Continuously rated.

Ordering Example:

S032A24V (24V to 12V @2A) Freestanding
 S032AR24V (24V to 12V @2A) 1U Rack Mount

Dimensions:

- Length: 19" (430mm)
- Depth: 200 mm
- Height: 1U (42mm)

Finish:

- Colour: Powder Coated Motorcraft Grey

S032A			S032B			S032C		
Input	OP V	OP A	Input	OP V	OP A	Input	OP V	OP A
12V	12V	1A	12V	24V	0.5A	12V	48V	0.3A
24V	12V	2A	24V	24V	1A	24V	48V	0.5A
48V			48V					
72V			72V					
110V			110V					
220V			220V					



Panels

theViSS
ViSS Electronics

ESK002 Series

DC Distribution Panel With Integral DC-DC Converter



Distribution Panel Specification

- Removeable Front cover (no screws)
- Front access for wiring
- Input breaker and "Input Power" indicator.

- "Output Power" indicator.
- Output breakers x 3 with 3 spare positions.
- Circuit breaker rating dependant on modal type.
- System earth terminal.



Converter Specification

- Isolated, Input to Output & to Case.
- Rating up to 500W.
- Converter can be removed quickly & easily, without disturbing system wiring.

Model	Output
ESK002/110VDC/48/6	48V @10A
ESK002/110VDC/12/6	12V @30A
ESK002/48VDC/12/6	12V @30A



- For other, possible Input and Output voltages, see model S002 in DC-DC section

Dimensions:

- Width 19"
- Height 3U

Finish: Powder Coated

Colour: Motorcraft Grey

ESK112 Series

DC Distribution Panel With Integral AC Power Supply



Distribution Panel Specification

- Removeable Front cover (no screws)
- Front access for wiring
- Input breaker and "Input Power" indicator.

- "Output Power" indicator.
- Output breakers x 3 with 3 spare positions.
- Circuit breaker rating dependant on modal type.
- System earth terminal.



Power Supply Specification

- PSU Rating up to 500W.
- PSU can be removed quickly & easily, without disturbing system wiring.

Input	Output
ESK112/220VAC/48/6	48V @10A
ESK112/220VAC/24/6	24V @20A
ESK112/220VAC/12/6	12V @30A

Dimensions:

- Width: 19"
- Height: 3U

Finish:

Powder Coated Motorcraft Grey



ESK031 Series



- Removeable Front cover (no screws).
- Front access for wiring.
- Output breakers x 3 with 3 spare positions (2 channels).
- Circuit breaker rating 6A.
- System earth terminals.
- Locating holes for cable ties.
- Other versions available.

Cat No. Item	DC Distribution Panel(s)
ESK031/2/6	DC Distribution Panel, Front Access, 6 way, Dual cct.

S031 Series



- Front-panel label holder is included.
- Front access for wiring.
- System earth terminals.
- 5A breakers (Default type).
- Other versions available.

Cat No. Item	DC Distribution Panel(s)
S031/1/6	Front Access, 6 way
S031/2/6	Front Access, 6 way, Dual cct.
S031/1/10	Front Access, 10 way
S031/1/12	Front Access, 12 way

Dimensions

- Width 19"
- Height 3U

Finish:

Powder Coated Motorcraft Grey



S033 Fuse Panel



Standard Features:

- Two channels.
- Rated at 600 amps maximum per channel.
- -48 VDC operating voltage.
- LED "Power" indicator (green) for each channel.
- LED "Alarm" indicator (red) for each channel.
- Designation holder.
- Potential-free contacts for external "Fuse-fail" alarm, for each channel.
- Screw terminals for Inputs and Outputs.

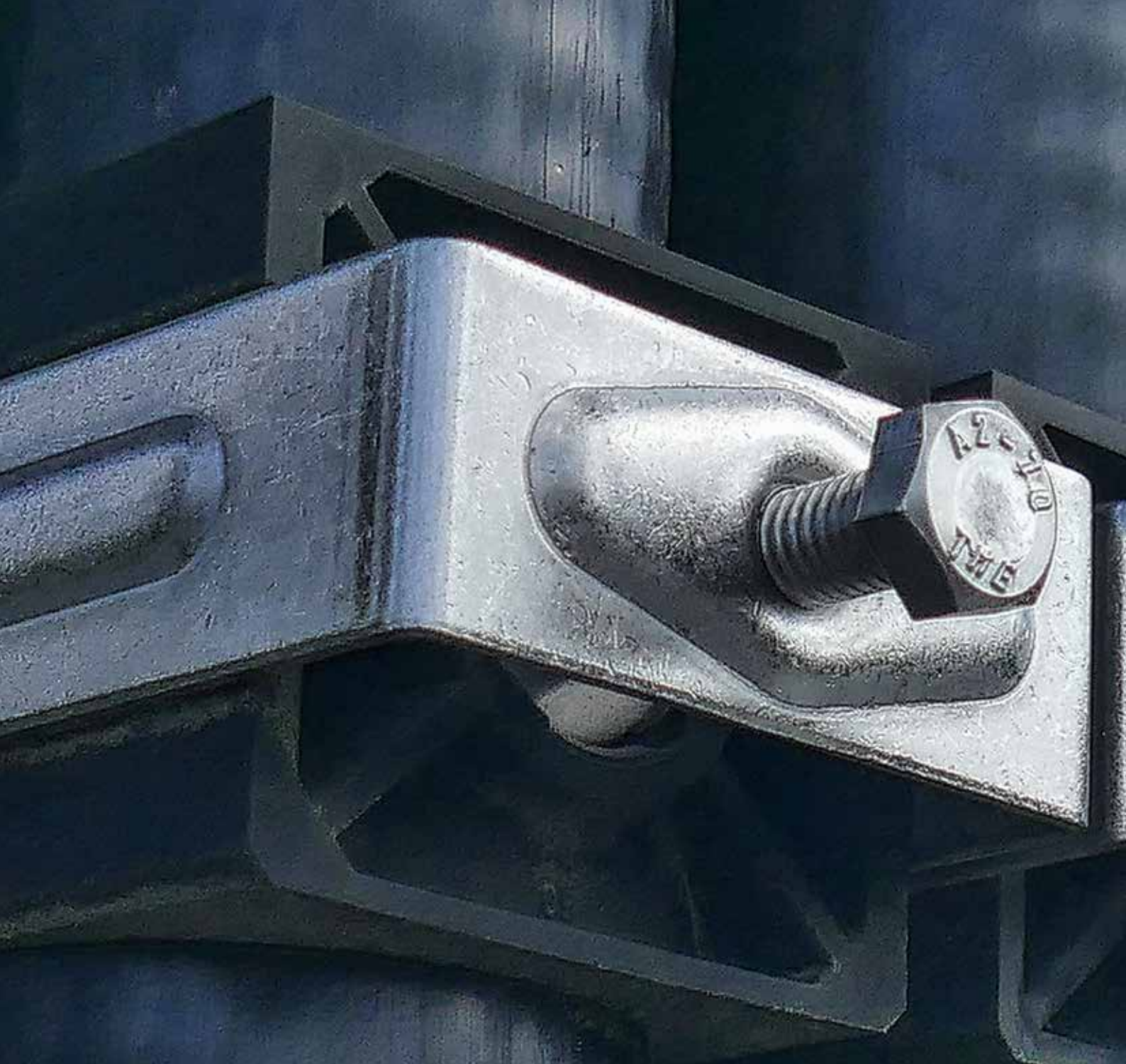
Dimensions:

- Depth: 50mm
- Width: 19" (430mm)
- Height: 1U (42mm)

Finish:

- Colour: Powder Coated Motorcraft Grey





Other Products

theViSS
ViSS Electronics

S394 Balun Transformer

S394 Balun Transformer



**Male with Phoenix Connector
(Type S394MTB)**

Balun

Input / Output

Input / Output

75 ohm (unbalanced)

120 ohm (balanced)

2MBit

Units with other impedance's made to order.

Connection Details:

- 75 ohm ports via BNC connectors (state M or F for male or female) with 10cm RG59 coax
- 120 ohm ports via pluggable terminal block or RJ45 Connector (state TB or RJ).



**Female with RJ45 Connector
(Type S394FRJ)**

Dimensions:

- Length 145mm
- Width 40mm
- Height 22mm

Finish:

- Colour: Black Plastic

(Type S394-8E1)

S394-8E1 Balun Transformer



Rear View

16 x BNC Female Connectors at rear



Front View

8 x RJ45 Connectors on front

- Earth Tab Connector

Dimensions

- Depth: 240mm
- Width: 19" Rack
- Height: 1U
- Colour: Motor-craft Grey or Black Aluminium

S109CB 19" Rack Mount Power Supply



S109 2U 19" Rack Mount AC Switch-mode Power Supply

Standard Version

- Input Voltage 180-250VAC.
- Fully fused.
- Output 48VDC Continuously rated.
- Output Over-Voltage Crowbar Protection.
- "220V AC Input" indicator.
- "DC available" indicator.
- IEC Chassis Plug with 3M mains cable.
- "ON / OFF" switch.

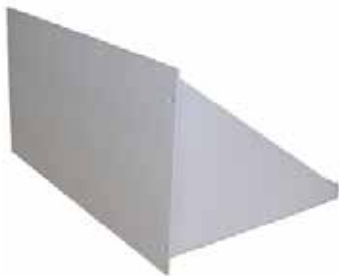
S109C

Input	Output
220V AC	48V DC @ 5A

LS Version

- LS version has terminals for battery connection and has a low voltage disconnect (Load-shed) circuit included.
- Suitable for use with lead-acid batteries (not supplied).

S02/06 Battery Shelf, Rack Mount



Front View



Rear View

Suitable for 2 Lead-Acid Batteries, up to 12V 102A/Hr.

Dimensions:

- Width: 19"
- Depth: 350mm
- Height: 6U
- Colour: Powder Coated Motocraft Grey
- Mass: 9Kg (batteries not included)

S052 Ethernet Alarm Unit



Freestanding unit

- Ethernet Module for reporting PSU status.
- IEEE 1986 Compliant.
- RJ45 socket for Ethernet connections.
- PSU monitoring using web browser.
- Web Browser or Client / Server as per customer requirements.
- Optional RS232 Serial Port.

Power Requirement Selection..

S052A	S052B	S052C	S052L
12V DC Neg Gnd	24V DC Pos Gnd	48V DC Pos Gnd	220V AC Neg Gnd

S052 Features:

- **Isolated Analogue Inputs for**
 - a) Volts
 - b) Amps
 - c) Voltage of Individual Batteries in a string.
- **Temperature, ambient.**
- **Temperature, specific (eg. Batteries).**
- **Digital Outputs for Remote Control.**

S052 Specifications:

- **Analogue Inputs 8**
- **Analogue Inputs, Differential 1**
- **Digital Inputs 5**
- **Digital Outputs, Potential-free Contacts 3**
- **Ethernet Connection RJ-45**

Dimensions:

- Length: 190mm
- Depth: 150mm
- Height: 65mm
- Colour: Powder Coated Black
- Mass: 0.5Kg

theViSS

The VALUE created by INTEGRATED SMART SOLUTIONS